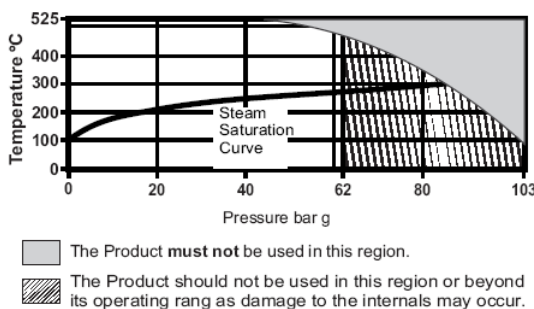




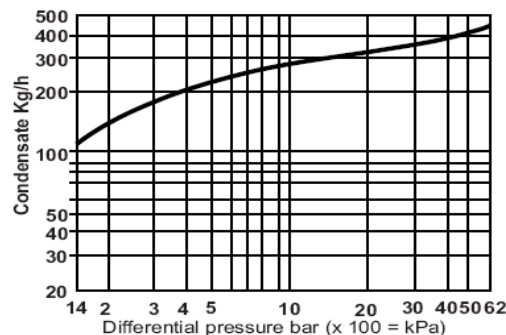
The UCM-UTD62 is a *UKL Steam Trap Module* designed with an in-built Bypass valve & isolation valves for high pressure steam applications up to 62 bar(g). Replaceable trap internals and inbuilt strainer eases inline maintenance.

The UTD-62 has upstream piston valve which isolates the upstream piping of the steam trap. Also UCM-UTD62 has a downstream piston valve that helps isolate the module from downstream piping and to check the trap condition a Trap Test valve is also provided.

Pressure / Temperature Limits



Capacities:



End Connections:

- 15 NB Socket Weld End Connection.
- 20 NB Socket Weld End Connection.

Limiting Conditions:

- Max. Design Pressure 103 bar g @93 C
- Max. Design Temperature 525 C@42.7bar g
- Max. Operating Pressure 62 bar g @482 C
- Max. Operating Temperature 525 C@42.7bar g
- Max. Operating Back Pressure – 80% of upstream pressure.

Cold Hydraulic test pressure 155 bar g

Maintenance:

To clean or replace strainer screen

Strainer screen can be removed for cleaning by removing strainer cap. Remove strainer screen, clean properly and fit new or cleaned strainer screen into recess of the cap. A old gasket should be replaced with new one and the cap screwed into the body. The use of a thread lubricant is recommended.

To replace the cover studs

After removing old cover studs, fit new cover studs until the studs move to bottom face of body flange. The use of a thread lock (High temperature grade) is recommended.

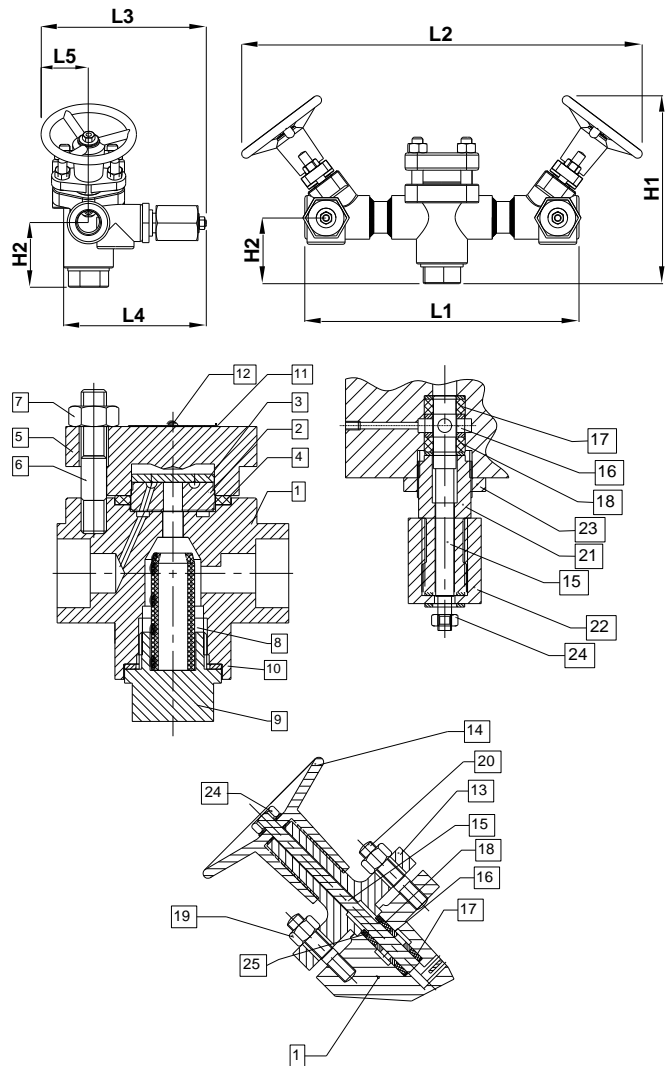
Bypass Valve & Trap Test Valve Maintenance

Lubricate valve frequently with appropriate lubricant. Lubricate the stem piston & bonnet threading of drain valves. Operate the valves after lubrication.

Installation:

1. The UCM-UTD62 is installed with flow in the direction of the arrow. Installation to be in horizontal direction.
2. There should be sufficient access to the hand-wheel for proper operation of both upstream and downstream isolation valves.
3. There should be sufficient access to the strainer to allow Strainer to be cleaned periodically.
4. There should be sufficient access for Bypass Valve and Trap Test valve to operate.
5. Ensure all the valves are either fully opened or fully closed. Do not keep partially open/ crack open.
6. Hot Tightening should be done after operating the module for approximate 5-6 hrs.

| BILL OF MATERIAL | | | |
|------------------|--------------------------|-----------------|--|
| PART NO. | PART NAME | MATERIAL | MATERIAL CODE |
| 1 | BODY | ALLOY STEEL | ASTM A 217 Gr. WC6 |
| 2 | SEAT | TOOL STEEL | ASTM A 681 Gr. D2 |
| 3 | DISC | TOOL STEEL | ASTM A 681 Gr. D2 |
| 4 | GASKET | SPIRAL WOUND | SPIRAL WOUND AISI 304 WITH GRAPHITE FILLER |
| 5 | TOP COVER | ALLOY STEEL | ASTM A 217 Gr. WC6 |
| 6 | STUDS | STAINLESS STEEL | ASTM A 193 Gr.B16 |
| 7 | NUTS | STAINLESS STEEL | ASTM A 194 Gr.8M |
| 8 | FILTER | STAINLESS STEEL | AISI 304 |
| 9 | FILTER CAP | ALLOY STEEL | ASTM A 217 Gr. WC6 |
| 10 | GASKET FOR F.CAP | KLINGER STD. | GPRAPHITE |
| 11 | NAME PLATE M2 X 6L | STAINLESS STEEL | AISI 304 |
| 12 | RIVET M | ALUMINIUM | - |
| 13 | BONNET | ALLOY STEEL | ASTM A 216 Gr. WCB |
| 14 | HANDWHEEL | CAST STEEL | ASTM A 216 Gr. WCB |
| 15 | SPINDL (INTEGRAL PISTON) | STAINLESS STEEL | ASTM A 276 Gr. TP. 410 |
| 16 | LANTERN BUSH | STAINLESS STEEL | ASTM A 276 Gr. TP. 410 |
| 17 | LOWER VALVE RING | KLINGER STD. | RE-ENFORCED LAMINAR GRAPHITE |
| 18 | UPPER VALVE RING | KLINGER STD. | RE-ENFORCED LAMINAR GRAPHITE |
| 19 | BONNET NUT M8 | ALLOY STEEL | ASTM A 194 Gr. 2H |
| 20 | STUD | CARBON STEEL | ASTM A 193 Gr. B7 |
| 21 | BOTTOM BONNET | S. S. | ASTM A 276 TP-410 |
| 22 | BOTTOM HANDWHEEL | FORGED STEEL | ASTM A 105N |
| 23 | LOCK NUT | FORGED STEEL | ASTM A 105N |
| 24 | HANDWHEEL NUT | STAINLESS STEEL | AISI 316 |
| 25 | BELLEVILLE WASHER | SPRING STEEL | 50 Cr. V4 / ASTM A 240 Gr. 302 |



| Dimensions in mm (Valves – Close Condition) | | | | | | | |
|--|-----|-----|-----|-----|-----|----|----------------------|
| SIZE | L1 | L2 | L3 | L4 | H1 | H2 | WEIGHT (Approx.) Kg. |
| 15NB | 320 | 420 | 151 | 130 | 170 | 60 | 6 |
| 20NB | 320 | 420 | 151 | 130 | 170 | 60 | 6 |

| Dimensions in mm (Valves - Open Condition) | | | | | | | |
|--|-----|-----|-----|-----|-----|----|----------------------|
| SIZE | L1 | L2 | L3 | L4 | H1 | H2 | WEIGHT (Approx.) Kg. |
| 15NB | 320 | 436 | 182 | 152 | 182 | 60 | 6 |
| 20NB | 320 | 436 | 182 | 152 | 182 | 60 | 6 |

Other Products :



Cast / Forged Steel Piston Valves, Strainers – “Y” Type
 Steam Traps – Thermodynamic, Thermostatic, Ball Float Traps, Pressure Reducing Station, Condensate Recovery Products.
 Level Gauges – Reflex, Transparent, Bicolor.

FSD Products : Compressed Asbestos / Non Asbestos Fiber Sheeting / Cut Gaskets, Spiral Wound Gaskets.

In view of technical progress design and dimensions are subjected to change without notice.

Branch Offices :